



2Simple Painting Tools Guide



Contents

1. Introduction	3
2. 2Paint	4
Top menu bar	4
Tools	7
Effect tools	9
Background	10
3. Paint Projects	11
4. 2Paint A Picture	12

1 Introduction

Purple Mash contains two main painting tools; **2Paint** and **2Paint A Picture**. It also contains many **Paint Projects** that are topic or theme specific.

Use the following sections of this guide to find the best tool for the lesson that you want to teach.



2Paint is a very simple paint tool that allows even the youngest children to choose simple, 'real-world' drawing tools to use on screen as well as progressing to more advanced tools such as Flood Fill or Shape tools.



2Paint A Picture is a drawing tool that helps you to create various painting effects and combine these effect to make pictures.



Paint Projects contains over 160 themed paint tools for children providing them with appropriate art tools for a given theme. For example, when drawing Hansel and Gretel's house, children can draw with various sweets and chocolate textured pens whereas drawing a dinosaur would present reptile skin textured pens. Some are texture based, others are pattern based.

The video guides within 2Paint and 2Paint A Picture give some further ideas about how to use the tools.

Click on the Video Guide button  at the top right to access them.

2Paint



2Paint is a very simple paint tool that allows even the youngest children to choose simple, 'real-world' drawing tools to use on screen as well as progressing to more advanced tools such as Flood Fill or Shape tools.

The video guides within 2Paint give some further ideas about how to use the tools. Click on the Video



Guide button at the top right to access them.

2.1 Top menu bar

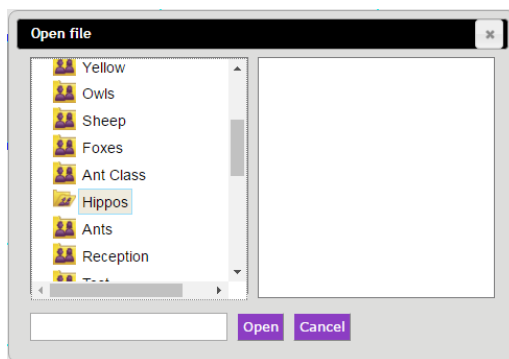
The top menu bar uses familiar icons to perform actions.



New File button: use this to open a new blank file.



Open button: this will give you the options of opening 2Paint documents from your PC (or other device) or from your saved work. If you have folders set up on Purple Mash, you will also be able to open 2Paint files from one of these.



Save button: this will give you the options of saving the 2Paint file that you have created to your online documents (My Work), online folders or PC (or other device).



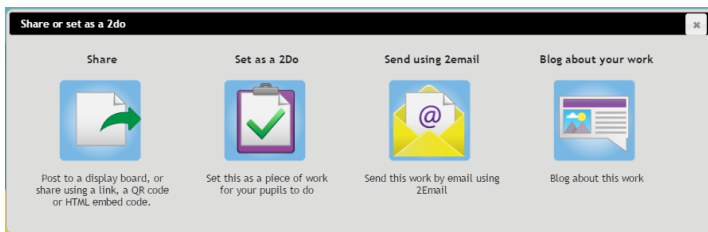
Export as Image: you can right-click on the image to save it to your computer or click on the Download button to save it into your Downloads folder.



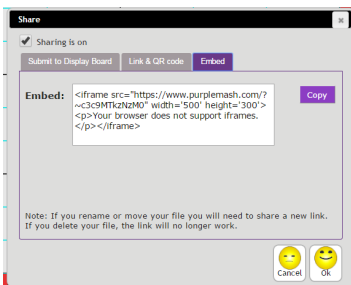
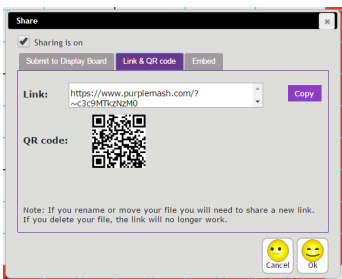
Print button: this allows you to print your picture.



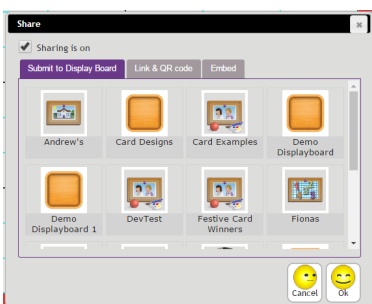
Share button: this will give you various options for sharing your file.



Using Share, you can get a unique link or QR code to your work or code to embed it on a website. The QR code can be saved by right-clicking on the image.

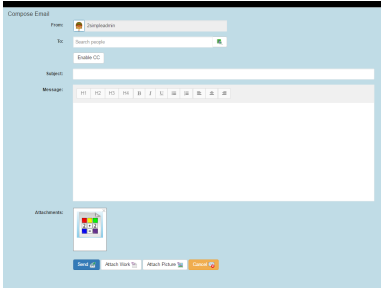


You can share your work to a Display Board or Blog so that everyone can see it. Display Boards and Blogs can be configured in the Teacher's Section of Purple Mash.



You can also set the work as a 2Do for your pupils to complete.

Clicking on the Send Using 2Email button will open a new mail window with your file as an attachment to add a message and send as an email.



For further details of sharing options, see the Sharing guide at [Generating Share Links Guide](#).

2.2 Tools

On the left-hand side are the tools. There are two tabs: Colours and Painting Tools.

Colours



The arrows at the top and bottom can be used to locate different colours, thicknesses and textures.

Click on a pen to use it.

Use the eraser at the top to remove unwanted drawing.

Line thickness can also be altered in the painting tools tab.

Painting Tools

Straight line; press the mouse button down at the start of the line, stretch the line out and release the mouse button at the end of the line.

Cloud effect



Eraser

Pen or Pencil; the pen draws thicker lines than the pencil

Draw a square/rectangle

Circle tool

Flood fill; fill an area with the selected colour.

Sparkle effect

Alter line thickness

2.3 Effect tools

The effect tools can be found on the top right toolbar.



Symmetry tool: this will create a line of symmetry vertically down the centre of the page and any drawing will be reflected in this line to make a symmetrical picture.



Magnet tool: this can help when using the Straight Line tool to draw. Lines will be more easily connected to one another.



Undo button: this will undo the last action. It can be pressed repeatedly to undo many actions.



Redo button: this will appear once Undo has been clicked and can be used to redo the last undone action.

At the bottom of the page is an area in which text can be entered. This can be used to add a title or name to the picture.



2.4 Background

You can set a background for your file using these two buttons.



The background image button allows you to select a background image from our ready-made selection. You can also upload an image from your computer.



If you have a web-cam attached to your PC, you can take a photo and use that as the background. **Note** that for security and privacy reasons, this can be turned off for an individual school.

3 Paint Projects



Paint Projects are over 160 themed paint tools for younger children providing them with appropriate art tools for a given theme.

For example, when drawing Hansel and Gretel's house, children can draw with various sweets and chocolate textured pens. Whereas drawing a dinosaur would present reptile skin textured pens.

Some are texture based, others are pattern based.



The **Topics tab** on Purple Mash organizes topic based resources into themes and subjects so you can quickly browse through the nearly 1000 activities available. These topics contain links to many more Paint Projects.

You can also use the search bar to search for a topic and any paint projects relevant to that topic will appear within the search results.

4 | 2Paint A Picture



2Paint A Picture is a drawing tool that helps you to create various painting effects and combine these effect to make pictures.

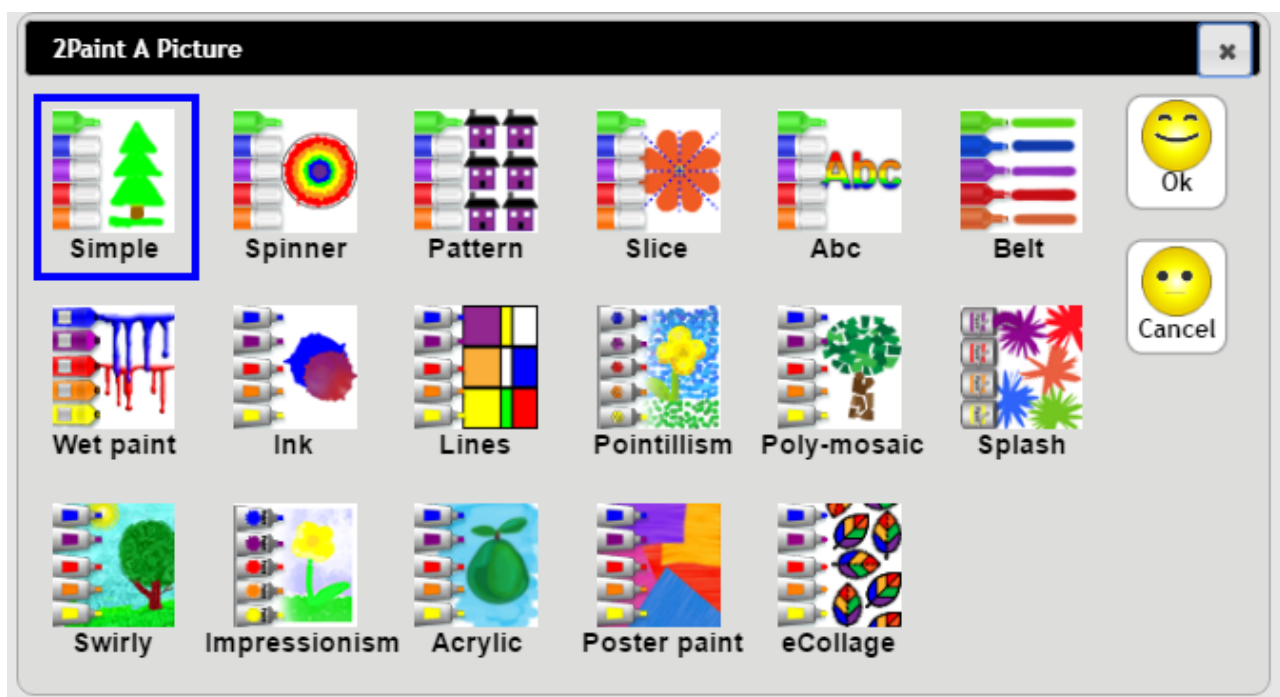
The video guides within 2Paint A Picture give some further ideas about how to use the tools. Click on



the Video Guide button at the top right to access them.

Painting effects

When you open the tool, a template choice screen opens, displaying all of the possible paint effects.



Most of the effects have a corresponding help video to explain how to use the effect. Additionally you will find the following effects:

Abc: Type a word in the box on the left and it will appear on the screen. Create a pattern using the pens in the small box on the left hand side and the pattern will appear on your letters. There is a choice of a few fonts. This is fun for making name cards or labels.

Poly-mosaic: Draw using the paint tools and your picture will appear with a mosaic effect. Use the width slider to alter the size of the mosaic pieces.

Splash: Select a colour and then click on the page to make a paint splash effect. Use the width slider to alter the size of the splash. Combine with other effects to make a firework display.

Swirly: Draw or click with the mouse to create spiral effects on the page. Use the width slider to alter the size of the swirl.

Acrylic: Create an acrylic paint effect. Use the water pot to water down your paint. Click on a colour within the picture with a different colour selected to mix the colours.

Poster paint: Paint to give a poster paint textured effect.

eCollage: This effect enables you to use draw or upload images including photos and use them to make a collage effect.

Firstly, draw a picture in the box in the top left or select some clipart using the clipart picker button at

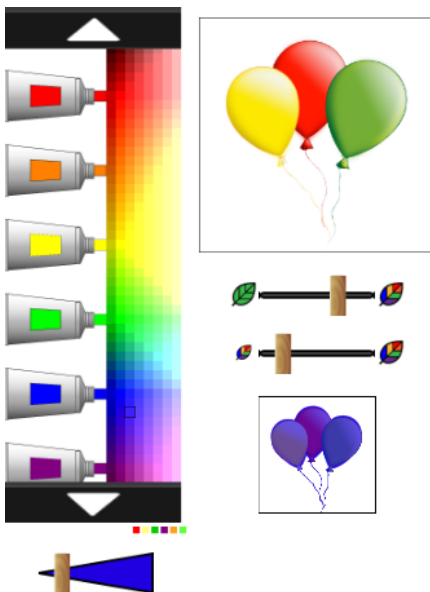


the top of the screen



button

on the clipart picker to upload your own images and photos.



Pictures can be recoloured by selecting a colour from the paint palette and using the uppermost leaf slider to recolour the image with that colour. The resulting image can be seen in the smaller box below the sliders.

Use the lower slider to control the size of the collage image.


Click on the main picture to produce the image. You can hold the mouse down and rotate the image.




Use the undo buttons if items are not placed correctly in order to replace them.

Combining effects

The video guides within 2Paint A Picture contains a video (Using many templates) demonstrating the

ability to combine different effects in one piece of work. Click on the Video Guide button  at the top right to access them.

Once you have made one image, click on the  button and the template choice screen will open. Select an effect and click OK and you will be offered the option to use the previous image in your new picture.

Top right menu buttons

The buttons on the top right menu depend upon the effect selected. Not all effects have all of these buttons present.



This button allows you to zoom in to complete detailed work.



Once you have zoomed in, use this button to zoom back out.



This opens a choice of outlines that you can use to guide your drawing: face, body and lines of perspective. The outlines open with draggable points which can be used to re-pose or re-shape them as desired.

The lines do not appear when the image is printed.

